

# Look to IBM for protection against sophisticated and complex IT threats.

*The IBM Infrastructure Threat Mitigation Services portfolio*





# GROWING THREATS. BETTER ANSWERS.

**Not so long ago, the typical IT network presented few vulnerabilities and faced few threats.** Traffic was in megabits. Applications were for e-mail or the Web. The common access policy was “deny.”

Then the complexity of business and IT began increasing—exponentially. And so did vulnerabilities and threats.

Today, gigabits travel the networks. Network applications can be the heart of business. And policies often default to “allow.” The result? Huge vulnerabilities. Thousands of potential targets. And IT threats that are big business.

The rate of attacks that exploit vulnerabilities is accelerating, and the form is more malicious than ever. An exploit can be stealthy. And it can be lethal to business.

## Attacks move quickly. So should security.

How does an organization defend itself? Responding after an attack won't work. Once a vulnerability is discovered, exploits can take advantage of it again and again. They move more quickly than ever. Today, an organization has to stay ahead of the threat.

It's unlikely, however, that an organization can stay ahead on its own. It can take six to nine people to provide 24x7 security—for a single seat. And even

if resources are available, security requires sophisticated tools and skills, emergency response capabilities and an understanding of the latest attack methods, trends and technologies.

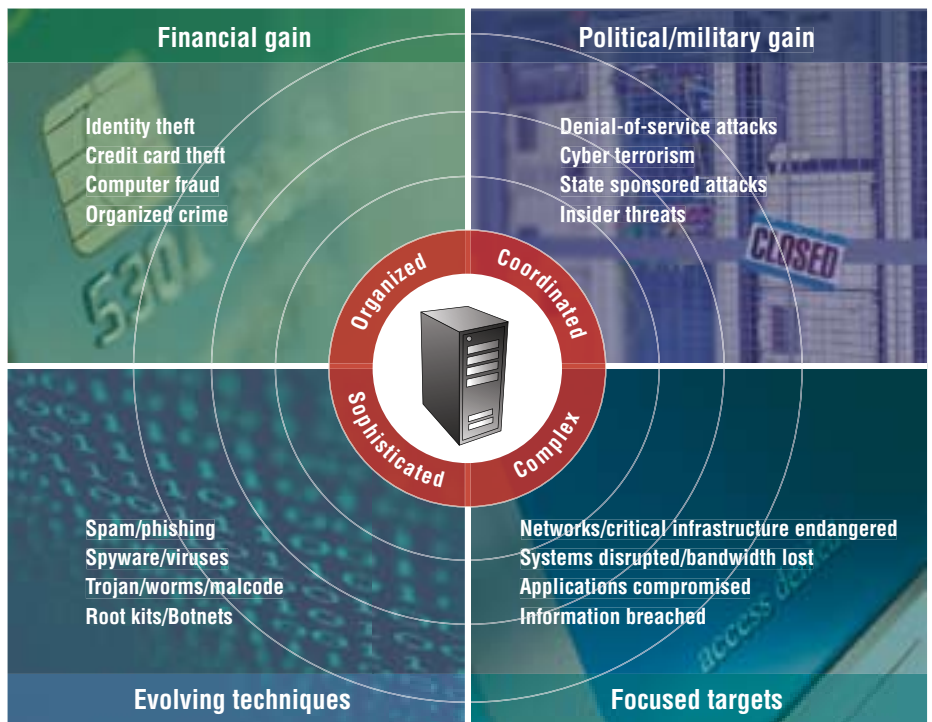
Point solutions can't defend against complex threats either. Instead, today's integrated environments require the protection of a robust and comprehensive approach. And they require a proactive and preemptive way to mitigate threats.

## IBM's comprehensive security portfolio

The IBM Internet Security Systems™ (ISS) portfolio provides integrated solutions designed to secure the environment for doing business and delivers management capabilities for protecting the IT infrastructure.

IBM provides a holistic solution based on world-class professional and managed security services. The power of these services comes from virtually unmatched research and development resources and IBM's ability to target needs and integrate solutions. IBM solutions focus on five key areas:

- **IBM Data Security Services:** helping to protect data from threats whether in transit or at rest
- **IBM Infrastructure Threat Mitigation Services:** helping organizations get ahead of threats with protection for networks and endpoints, security to help ensure application integrity and services to manage vulnerability





- **IBM Physical Security Services:** enabling the integration of digital video surveillance into network and IT systems
- **IBM Identity and Access Management Services:** designing, implementing, deploying and maintaining an integrated identity management system
- **IBM Security Governance Services:** evaluating existing security practices in the context of business needs

### **Proactive, preemptive protection**

With malware continuing to cause financial loss for businesses, IBM Infrastructure Threat Mitigation Services can provide a security posture designed to meet your business needs. IBM focuses on four points designed to provide secure access and protection:

- **Network protection:** facilitating holistic prevention and detection of threats
- **Endpoint protection:** providing vigilance for endpoints and security-rich solutions for remote access
- **Application integrity:** helping to secure applications and data for an enhanced security posture
- **Security and vulnerability management:** proactively identifying and managing the organization's security posture and related regulatory compliance

### **Rapid protection—delivered virtually**

A unique feature is IBM Virtual Patch® protection, which allows the safeguarding of IT assets without the need for a physical patch. If a scan of the network

detects vulnerabilities, an IBM ISS analyst can help protect the entire network or individual servers by blocking access to the vulnerability until the system is patched—supporting greater operational efficiencies and cost savings.

Together these services provide an integrated approach to security backed by extensive research and development. And they are delivered in ways that give organizations choice and flexibility in how they acquire security technologies.

### **X-Force research and development**

The core of IBM security services is the industry-leading IBM Internet Security Systems X-Force® research and development team, which focuses on analyzing and researching vulnerabilities to develop preemptive protection.

By understanding the tools and techniques used to create attacks, the X-Force team can protect against entire categories of vulnerabilities rather than specific threats. This process involves discovering and analyzing vulnerabilities, collecting data from multiple research sources, monitoring and analyzing global Internet threats 24x7 and providing notification regarding threats in real time.

### **IBM Professional Security Services**

From architecture and design services to policy development, assessments, staff augmentation and support for regulatory compliance efforts, the IBM

Professional Security Services portfolio provides a holistic approach to the full lifecycle of threat mitigation.

Targeted services can include Payment Card Industry (PCI) assessments, International Organization for Standardization (ISO) 17799 gap analysis, and vertical market and regulatory gap assessments—including services to facilitate compliance with Federal Financial Institutions Examination Council (FFIEC) regulations, the Federal Information Security Management Act (FISMA), Gramm-Leach-Bliley, the Health Insurance Portability and Accountability Act (HIPAA), the Sarbanes-Oxley Act and more.

### **IBM Managed Security Services**

IBM also provides a comprehensive portfolio of managed services for networks, servers and desktops—and for intrusion detection and prevention systems, firewalls, virtual private networks, and e-mail and Internet services.

IBM Managed Security Services is designed to quickly provide the protection an organization needs to improve business continuity and productivity and to maintain and improve regulatory compliance. IBM has found that managed services can reduce security costs by up to 55 percent.



### Why IBM?

IBM's comprehensive portfolio of professional and managed services is designed to provide effective threat mitigation in a world where threats are increasingly organized, sophisticated and complex.

We provide security services to more than 12,000 organizations worldwide—with a 94 percent satisfaction rate. And we were the first in the IT industry to be recognized by J.D. Power and Associates for globally delivering excellent technology service and support under the Certified Technology Service and Support Program.

The vendor-neutral IBM approach provides 24x7 access to end-to-end security solutions, including access via our Virtual Patch portal solution. Our X-Force team,

which provides research and development capabilities that are the basis of our solutions and services, is one of the most respected security intelligence organizations in the industry. Plus, IBM ISS offers a performance-based service level agreement (SLA) with a cash-back payment of US\$50,000 for any security breach resulting from a successful attack listed on the IBM Internet Security Systems X-Force Certified Attack List.\*

### For more information

For more information about IBM Internet Security Systems services and IBM Infrastructure Threat Mitigation Services, contact your IBM representative or visit:

**[ibm.com/services/us/iss](http://ibm.com/services/us/iss)**

© Copyright IBM Corporation 2007

IBM Global Services  
Route 100  
Somers, NY 10589  
U.S.A.

Produced in the United States of America  
05-07  
All Rights Reserved

IBM, the IBM logo, BladeCenter, Internet Security Systems, Proventia, Rational, SiteProtector, System p, System z, Tivoli, Virtual Patch and X-Force are trademarks of International Business Machines Corporation in the United States, other countries, or both.

Other company, product and service names may be trademarks or service marks of others.

References in this publication to IBM products or services do not imply that IBM intends to make them available in all countries in which IBM operates.

\* Money-back payment (for IBM Managed Protection Services – Premium Level only): If IBM Internet Security Systems fails to meet the Security Incidents Prevention Guarantee, client shall be paid US\$50,000 for each instance this guarantee has not been met. Please see IBM Internet Security Systems SLAs for more details.

**IBM provides the comprehensive security solutions that organizations need, based on a full portfolio of services, software and hardware, including:**

#### Services

- Security assessments
- Threat prevention and mitigation services—IBM ISS
- IBM Managed Security Services
- IBM Digital Video Surveillance
- IBM Identity and Access Management Services
- Regulatory and compliance services
- IBM Data Security Services

#### Software

- IBM Rational® Method Composer
- IBM Tivoli® suite of products
- IBM Proventia® suite of products
- Consul suite of products

#### Hardware

- IBM System z™, IBM System p™ and IBM BladeCenter® servers
- Proventia network appliances